

# Monthly Newsletter

APTA ALABAMA STUDENT  
SPECIAL INTEREST GROUP



7 October 2024



APTA AL ANNUAL CONFERENCE - INAUGURAL SSIG MEETING

Join Us for Our First Student Conclave Event! Click [HERE](#) to Register!

 **Date: November 2, 2024**


 **Location: University of Alabama at Birmingham, School of Health Professions**

Who: PT, PTA, and Pre-PT Students from across Alabama

Cost: \$15 for APTA AL Members, \$25 for Non-Members

Following the conclave, join us for a **PT Night Out at Cahaba Brewing Company!**

This event offers a unique opportunity to attend engaging lectures on current evidence-based practices, as well as opportunities for networking and professional development. You'll hear from the UAB Chief of Sports Medicine/Orthopedic Surgeon, along with sessions on Practice Entrepreneurship for PTs and PTAs. Additionally, there will be panels like the Professional Development Panel for the PT: Residency and Clinical Specialization in the afternoon!

 Keep an eye on your emails for registration details—more information coming soon!

In this newsletter you can expect:

---

Student Conclave

---

National PT Month!

---

Student Spotlight!

---

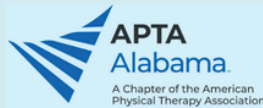
How to Join Contact Us

---

Get Involved! Membership Benefits

---

*Natasha Brooks,*  
*Student Council Representative*



### Meet Our Awesome Speakers



Nadia Jones, PT, DPT, Board-Certified Clinical Specialist in Sports Physical Therapy, CSCS



Bailey Barnett, PT, DPT, Pelvic Floor Therapist, PF-LI, CMFA - P&P, Dry Needling Certified, CF-OL



Blair Saale, PT, DPT, Board-Certified Clinical Specialist in Neurologic Physical Therapy



## 2024 Alabama Student Conclave



02  
November  
2024  
8:30AM-  
5:30PM



SCAN ME

Scan this code to register!

### Meet The Rest of Our Awesome Speakers!



Amit Momaya, MD,  
Orthopedic Surgeon



Justin Kirk, PT, DPT



Doug Cole, PT, MPT,  
Board-Certified Clinical  
Specialist in Orthopaedic  
Physical Therapy



Don Lein, PT, PhD



Jeremy Fletcher, PT, DPT,  
Board-Certified Clinical  
Specialist in Orthopaedic  
Physical Therapy



Craig O'Neil, PT, DMT,  
Board-Certified Clinical  
Specialist in Orthopaedic  
Physical Therapy, COMT



## Global PT Day of Service -- Click [HERE](#) to Register!

October is **National Physical Therapy Month** — a time to recognize and celebrate the physical therapy profession, spotlight the many benefits of physical therapy, and highlight the impact that physical therapists and physical therapist assistants have in improving the health of society. One of the most important roles we have as PTs is serving our community.




As part of this celebration, we invite you to participate in the **Global PT Day of Service** (PTDOS) — a worldwide initiative where physical therapists, students, and assistants collaborate to make a positive impact in their local communities. Since its start in

2015, PTDOS has united over 23,000 volunteers from nearly 85 countries and all 50 U.S. states.

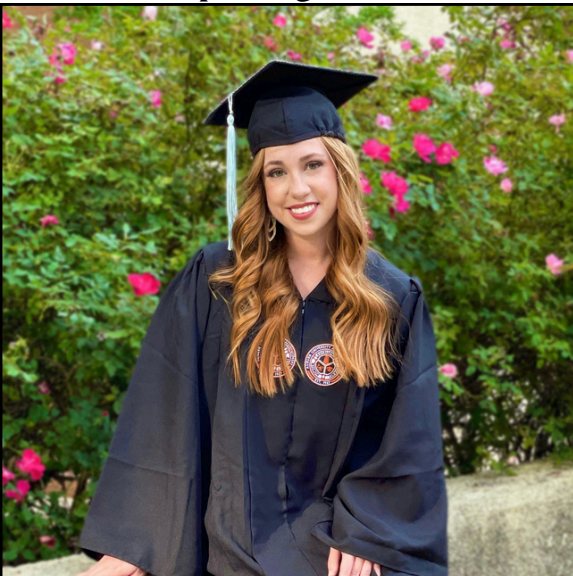
To mark our commitment to service, we've arranged multiple events around the state on PTDOS. Click the link above to register and find an event near you!

 **Date: October 12, 2024**

 **Locations:**

-  **Birmingham** — Forward in Faith Ranch
-  **Montgomery** — Campus Clean Up
-  **Dothan** — Champions of Hope 5K

## Student Spotlight



### Catherine Boswell

PT STUDENT -  
UNIVERSITY OF SOUTH ALABAMA

Here's what one of her peers had to say about her:

*"Catherine is such a light to our program. She exemplifies leadership, humility, compassion, and excellence in all her endeavors as a student. I believe she will truly impact every patient life she touches in a way that will empower and encourage all she interacts with."*



## How to Join and Follow Us

1. Join APTA Membership: Sign-up for APTA membership [here](#) to become a member. This membership allows you to join the Alabama State Chapter and receive emails and updates from us. It also automatically enrolls you in the Student Special Interest Group (SSIG).
2. Join APTA Sections: Join the APTA Alabama Chapter. Explore other sections/academies, which focus on various special interest topics such as patient populations, practice areas, and policy areas. Some sections produce specialty publications and offer courses and conferences. Find academies of interest [here](#).

Once you join, follow us on social media to stay up to date!



@apta\_alssig



<https://www.ptalabama.org/student-special-interest-group/>



## Contact Us

For any questions or to get in touch with an executive council member, please email your student council representative or any of the executive council members:



[nabrooks@uab.edu](mailto:nabrooks@uab.edu)

Additionally, you can submit updates about exciting events at your program here or nominate a fellow classmate for a student spotlight in next month's edition [here](#).

## APTA- How to Get Involved and More Membership Benefits

- Find the right volunteer opportunity for you via [APTA Engage](#).
- Join the [APTA Advocacy Network](#) to receive and respond to action alerts to support APTA's public policy priorities.
- Take advantage of free courses in the [APTA Learning Center](#).
- Find jobs and sign up for alerts from the [APTA Career Center](#).
- [Donate to PTPAC](#), the sole fundraising organization that supports and influences federal legislators in order to advance and protect APTA's priorities.
- Save 40% or more on the [APTA's Combined Sections Meeting](#).
- Check out these APTA scholarship opportunities for students within 12 months of completing all requirements for graduation!
  - a. [Mary McMillan Scholarship Award](#)
  - b. [Minority Scholarship Fund](#)
  - c. [Outstanding PT Student and PTA Student Awards](#)
  - d. Explore other section opportunities [here](#)!
- Get full text access to research and articles from more than 4,500 clinical and academic publications through the EBSCO discovery service provided by APTA's [Article Search](#).

To view a complete list, click [here](#)!

*Thank you for reading!*